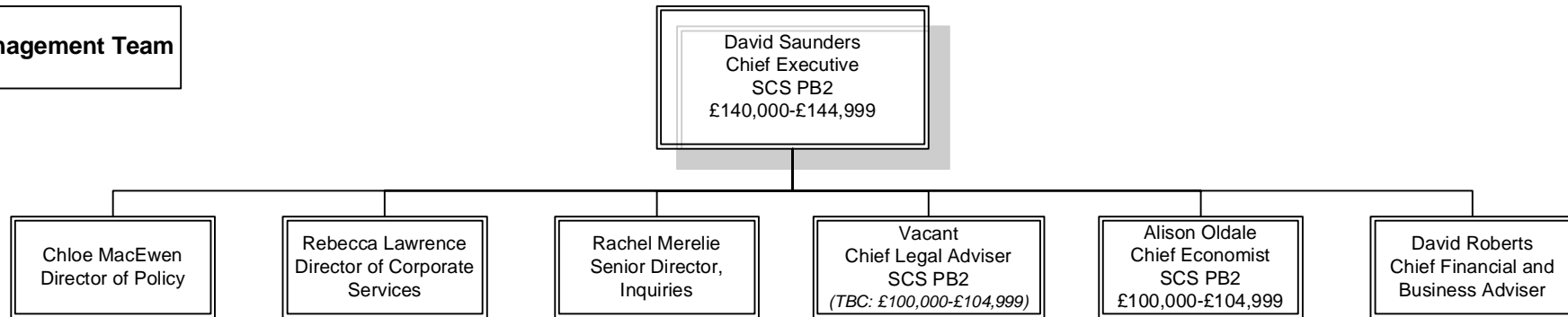


# Competition Commission Organograms

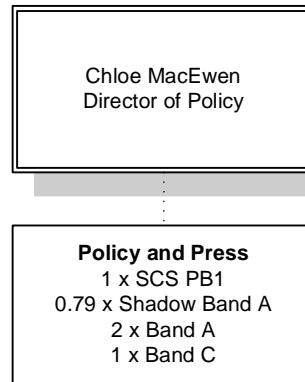
As at 30 June 2010

## Senior Management Team



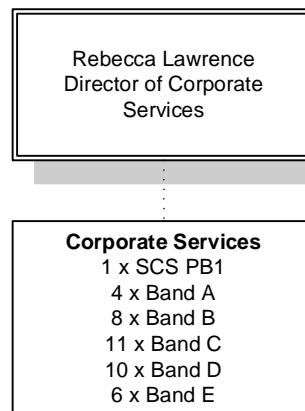
## Policy and Press

Total no. of staff in the Group = 5  
(4.79 FTE equivalent)



## Corporate Services

Total no. of staff in the Group = 40  
(40 FTE equivalent)

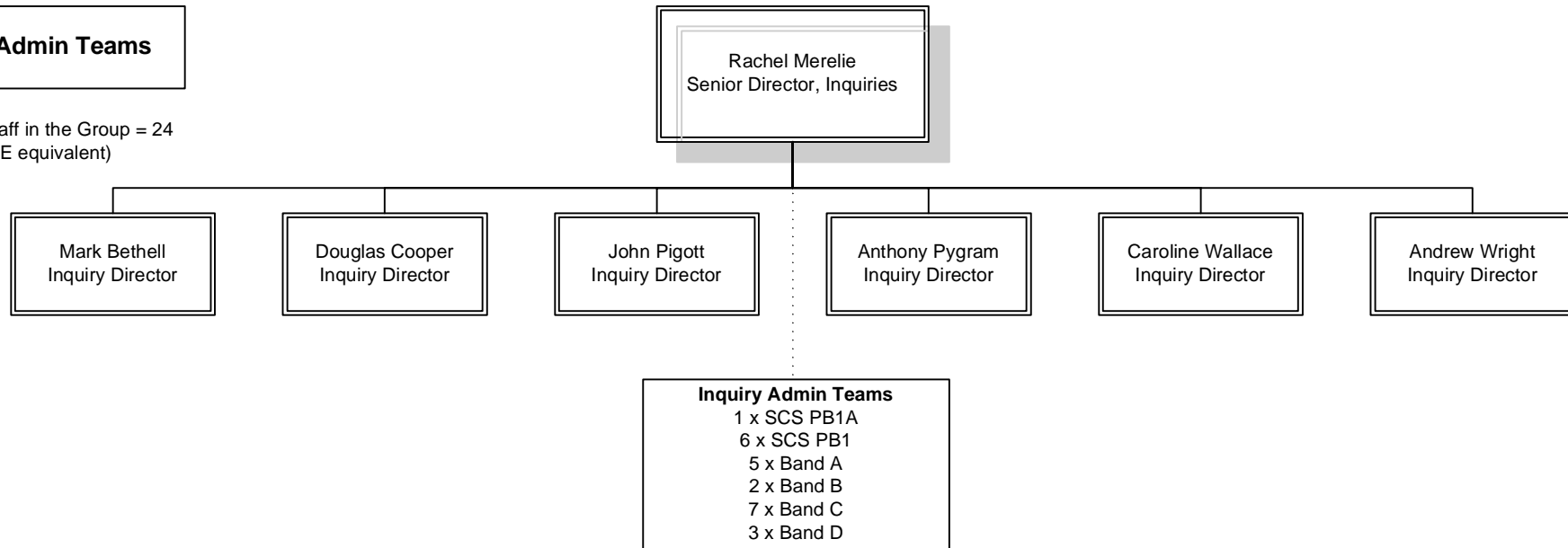


# Competition Commission Organograms

As at 30 June 2010

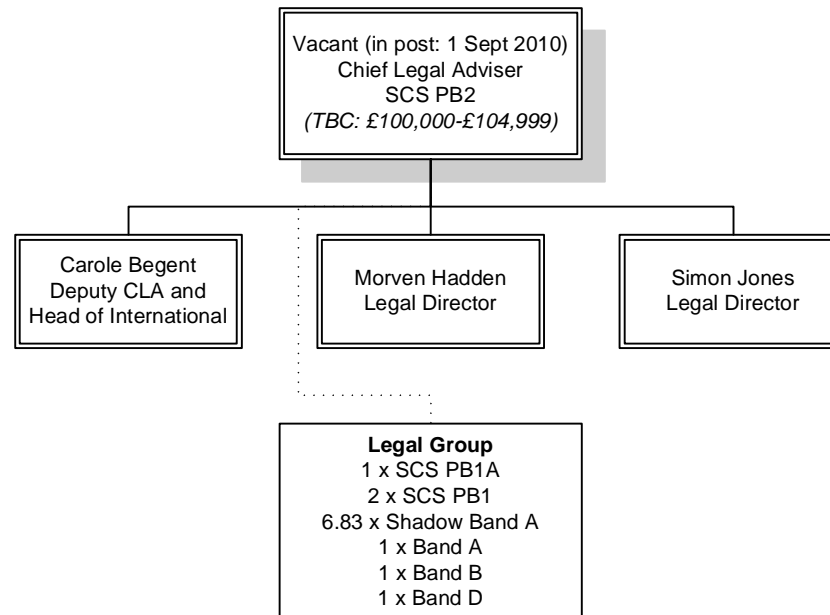
## Inquiry Admin Teams

Total no. of staff in the Group = 24  
(24 FTE equivalent)



## Legal Group

Total no. of staff in the Group = 14  
(13.83 FTE equivalent)

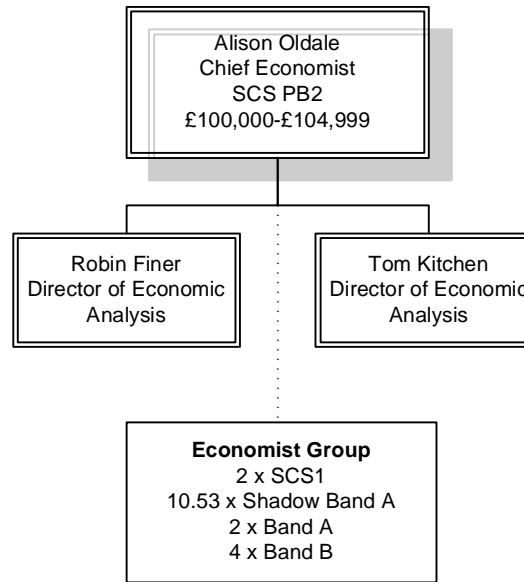


# Competition Commission Organograms

As at 30 June 2010

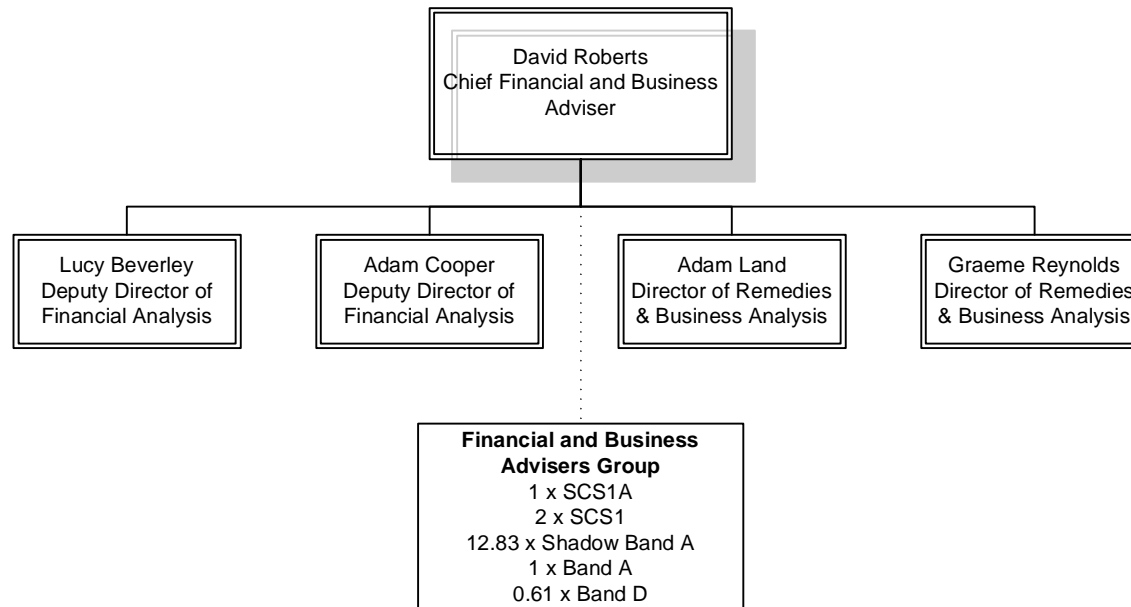
## Economist Group

Total no. of staff in the Group = 20  
(19.53 FTE equivalent)



## Financial and Business Advisers Group

Total no. of staff in the Group = 20  
(18.44 FTE equivalent)



**Note:**

Dotted connectors do not indicate direct line management relationships.

**Key to Pay Bands:**

Shadow Band A (SBA) equivalent to Grade 6/7

Band A equivalent to Grade 6/7

Band B equivalent to SEO/HEO

Band C equivalent to EO

Band D equivalent to AO

Band E equivalent to AA

*(Salary ranges are by role and are shown on the junior roles dataset)*