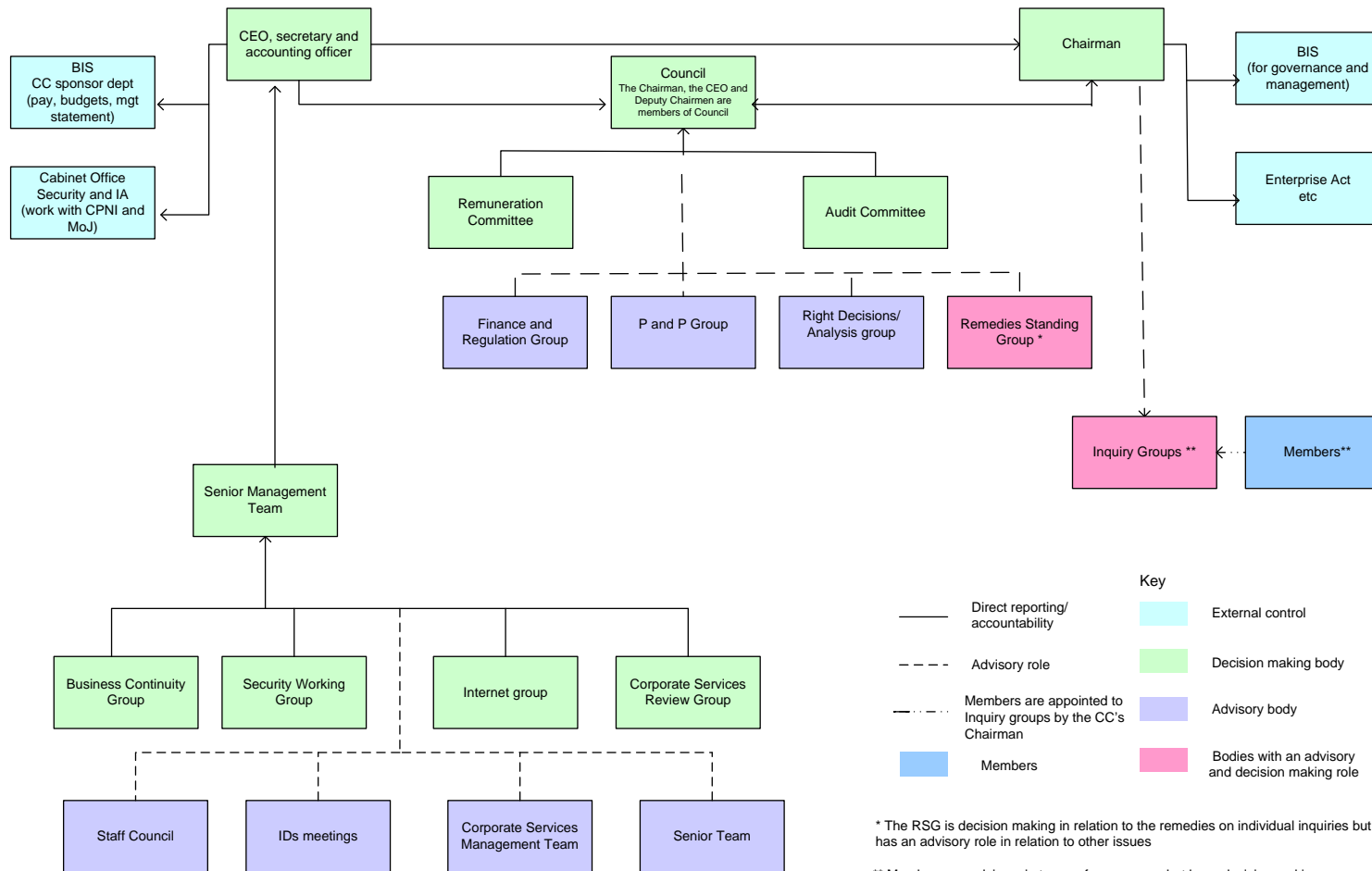


### Competition Commission - corporate governance structure



- Key**
- Direct reporting/ accountability
  - - - Advisory role
  - · - · - Members are appointed to Inquiry groups by the CC's Chairman
  - Members
  - External control
  - Decision making body
  - Advisory body
  - Bodies with an advisory and decision making role

\* The RSG is decision making in relation to the remedies on individual inquiries but has an advisory role in relation to other issues

\*\* Members are advisory in terms of governance but have decision making powers once appointed to a Group. Inquiry groups are chaired by members who may or may not be the Chairman or a Deputy Chairman